



## SRK20ZS-W

2.0kW

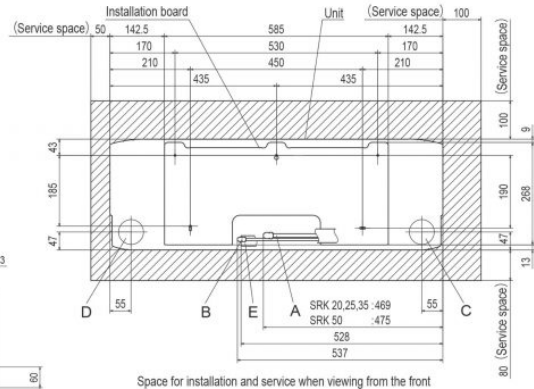
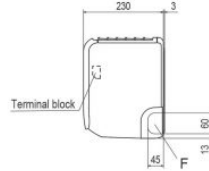
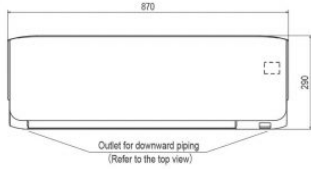
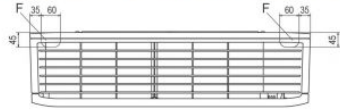
### Specifications

Nominal cooling capacity		kW	2.0
Nominal heating capacity		kW	2.7
Sound power level	Cooling	dB(A)	48
	Heating	dB(A)	50
Sound pressure level	Cooling(Hi/Me/Lo/Ulo)	dB(A)	34 / 25 / 22 / 19
	Heating(Hi/Me/Lo/Ulo)	dB(A)	36 / 29 / 23 / 19
Air flow	Cooling(Hi/Me/Lo/Ulo)	m <sup>3</sup> /min	9.3 / 7.0 / 5.9 / 5.0
	Heating(Hi/Me/Lo/Ulo)	m <sup>3</sup> /min	10.0 / 8.5 / 6.5 / 5.9
Exterior dimensions (H×W×D)		mm	290×870×230
Net weight		kg	9.5
Refrigerant piping size	Liquid / Gas	mm ø	6.35(1/4") / 9.52(3/8")
Clean filter			Allergen Clear Filter × 1, Photocatalytic Washable Deodorizing Filter × 1

- The data is measured under the following conditions(ISO-T1, H1). Cooling: Indoor temp. of 27°CDB, 19°CWB, and outdoor temp. of 35°CDB. Heating: Indoor temp. of 20°CDB, and outdoor temp. of 7°CDB, 6°CWB.
- Sound level the value in an anechoic chamber. During operation these values are somewhat higher due to ambient conditions.

**Schematics**

**SRK20ZS-W,-WB,-WT SRK25ZS-W,-WB,-WT  
SRK35ZS-W,-WB,-WT SRK50ZS-W,-WB,-WT  
SRK20ZS-S,-SB,-ST SRK25ZS-S,-SB,-ST  
SRK35ZS-S,-SB,-ST SRK50ZS-S,-SB,-ST**



Symbol	Content
A	Gas piping SRK20, 25, 35 $\phi$ 9.52 (3/8") (Flare)
B	Liquid piping SRK50 $\phi$ 12.7 (1/2") (Flare)
C	Hole on wall for right rear piping $\phi$ 6.35 (1/4") (Flare)
D	Hole on wall for left rear piping ( $\phi$ 65)
E	Drain hose ( $\phi$ 65)
F	Outlet for piping (on both side) VP16