



SRK50ZSP-W1 / SRC50ZSP-W1

5.0 (1.3~5.2)

Indoor Unit : SRK50ZSP-W1

Outdoor Unit : SRC50ZSP-W1

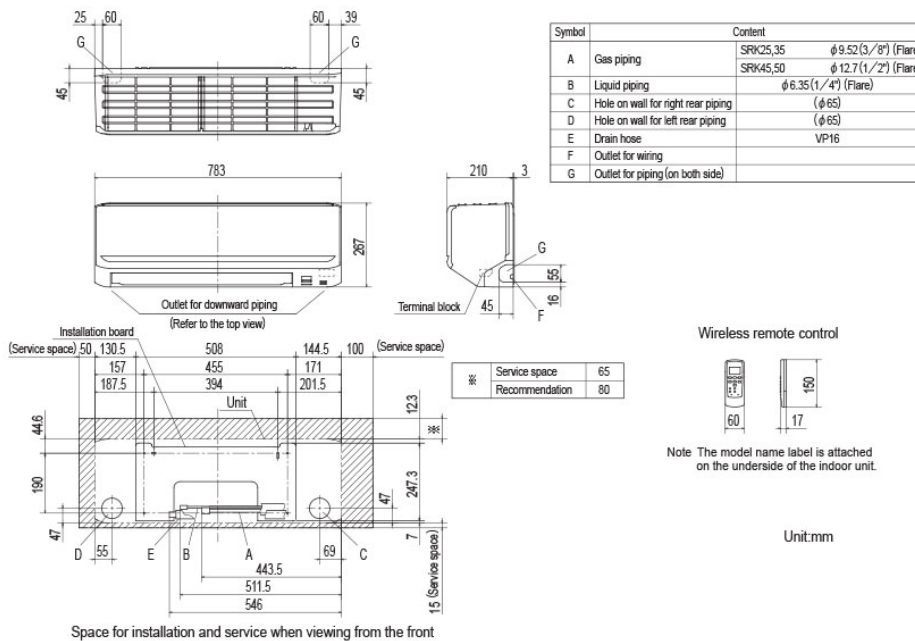
Specifications

R32

Indoor unit			SRK50ZSP-W1
Outdoor unit			SRC50ZSP-W1
Power source			1 Phase, 220 - 240V, 50Hz
Nominal cooling capacity (Min~Max)		kW	5.0 (1.3~5.2)
Nominal heating capacity (Min~Max)		kW	5.6 (1.2~5.8)
Power consumption	Cooling/Heating	kW	1.740 / 1.660
EER/COP	Cooling/Heating		2.87 / 3.37
Max. running current			A
Sound power level	Indoor	Cooling/Heating	59 / 62
	Outdoor	Cooling/Heating	65 / 65
Sound pressure level	Indoor	Cooling (Hi/Me/Lo/Ulo)	46 / 37 / 22
		Heating (Hi/Me/Lo/Ulo)	48 / 40 / 28
	Outdoor	Cooling/Heating	52 / 52
Air flow	Indoor	Cooling (Hi/Me/Lo/Ulo)	10.5 / 7.8 / 3.7
		Heating (Hi/Me/Lo/Ulo)	12.0 / 8.8 / 5.4
	Outdoor	Cooling/Heating	37.7 / 35.6
Exterior Dimensions	Indoor	Height x Width x Depth	mm
	Outdoor		267 x 783 x 210 595 x 780(+62) x 290
Net weight	Indoor / Outdoor		kg
Refrigerant	Type/GWP		R32 / 675
Refrigerant	Charge	kg/TCO2Eq	0.950 / 0.641
Refrigerant piping size	Liquid/Gas	ø inch	6.35 (1/4") / 12.7 (1/2")
Refrigerant line (one way) length		m	Max. 25
Vertical height differences		Outdoor is higher/lower	m
Outdoor operating temperature range	Cooling	°C	-15~46
	Heating		-15~24
Clean filter			-
Energy Class (Cooling/Heating)			A++/A+
SEER			6.30
SCOP (Average climate)			4.20
Pdesign (cooling/heating(@-10°C))		kW	5.00/3.80
Annual Electricity Consumption (cooling/heating)		kWh/a	278/1266
Designated Heating Season			Average

- The data is measured under the following conditions(ISO-T1, H1). Cooling: Indoor temp. of 27°CDB, 19°CWB, and outdoor temp. of 35°CDB. Heating: Indoor temp. of 20°CDB, and outdoor temp. of 7°CDB, 6°CWB.
- Sound level indicates the value in an anechoic chamber. During operation these values are somewhat higher due to ambient conditions.
- 'tonne(s) of CO2 equivalent' means a quantity of greenhouse gases- expressed as the product of the weight of the greenhouse gases in metric tonnes and of their global warming potential.
- SEER/SCOP are based on EN14825:2016 and Commission regulation (EU) No.2016/2281

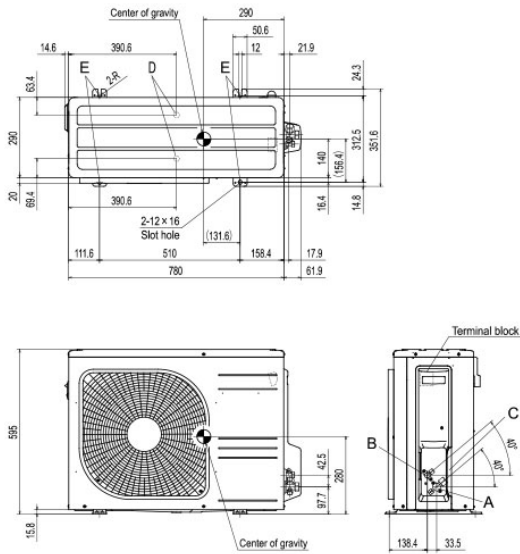
Schematics



EXTERIOR DIMENSIONS
(1) Indoor units
Models SRK25ZSP-W1, 35ZSP-W1, 45ZSP-W1, 50ZSP-W1

Symbol	Content
A	Service valve connection (gas side) $\phi 12.7(1/2")$ (Flare)
B	Service valve connection (liquid side) $\phi 6.35(1/4")$ (Flare)
C	Pipe./cable draw-out hole
D	Drain discharge hole $\phi 20 \times 2$ places
E	Anchor bolt hole M10-12 $\times 4$ places

- Notes
- (1) The unit must not be surrounded by walls on the four sides.
 - (2) The unit must be fixed with anchor bolts.
An anchor bolt must not protrude more than 15mm.
 - (3) If the unit is installed in the location where there is a possibility of strong winds, place the unit such that the direction of air from the outlet gets perpendicular to the wind direction.
 - (4) Leave 200mm or more space above the unit.
 - (5) The wall height on the outlet side should be 1200mm or less.
 - (6) The model name label is attached on the right side of the unit.



Models SRC45ZSP-W1, 50ZSP-W1